

FILM CUE REVIEW

Artificial Intelligence

Review by Dallas Crane

Edited by Derek Crane

Intro Main motif

Note choice in the intro motif versus David's lick. Notice how JW waits to use all the tones until he has established a few of them first.

Intro motif. Establishes the rhythmic pulse of David's lick.

David's lick. Notice how the G# and Eb distortions appear in the melodic content, but are untouched in the harmonic content (strings).

First iteration of Piano melody. Notice the use of the F natural.

Second half of Piano melody.



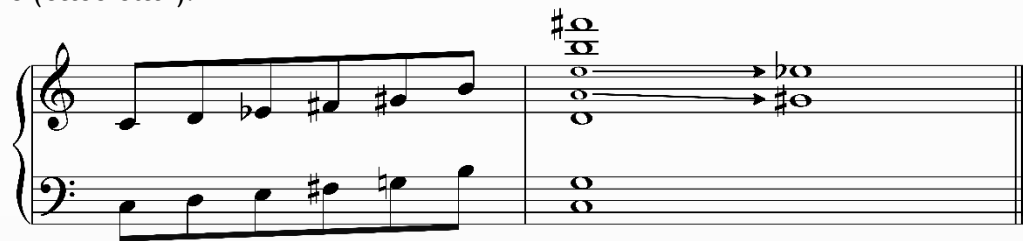
Distorted variant of Piano melody. Notice the dissonance created in the last bar by shifting notes up a half step momentarily (into D \flat).



Bass line. Notice the F \sharp that fights against the F natural in the Piano melody.



Scales derived from the notes in the Piano melody (treble staff) and notes from the bass line (bass staff).



Scales derived from David's lick (treble staff) and the string harmony (bass staff). The A, up until this point, is mostly implied as a structural element.



Melody introduced in colorful alto flute, English horn, and horn soli. Notice momentary shifts of upward half step (bars 3 and 5). The melody begins to use tones from both quite freely at this point. A appears (bar 7).

If you found this informative, please consider sharing this with your friends and subscribing to my YouTube channel for more Film Cue Review videos.

-Dallas